

# Northeast Florida Resource Guide

CRISIS #'S / MOBILE RESPONSE TEAMS / BEHAVIORAL HEALTH & RECOVERY RESOURCES

3RD EDITION, 2025



**talkable**  
COMMUNITIES

CLAY COUNTY

DUVAL COUNTY

FLAGLER COUNTY

NASSAU COUNTY

PUTNAM COUNTY

ST. JOHNS COUNTY

# Table of Contents

- 1** ABOUT TALKABLE COMMUNITIES
- 2** 24/7 CRISIS LINES
- 3** RECOVERY COMMUNITY RESOURCES
- 4** CLAY COUNTY RESOURCES
- 5** DUVAL COUNTY RESOURCES
- 6** FLAGLER COUNTY RESOURCES
- 7** NASSAU COUNTY RESOURCES
- 8** PUTNAM COUNTY RESOURCES
- 9** ST. JOHNS COUNTY RESOURCES

# About Talkable Communities



Talkable Communities is a collaboration of 5 nonprofit organizations covering 6 counties in Northeast Florida. The project advances mental well-being for children and families across the region by providing free mental health resources and training courses.



## 4 FREE MENTAL HEALTH TRAINING COURSES

- It's Time to Talk about it! (ITTAI)
- Question. Persuade. Refer. (QPR)
- Youth Mental Health First Aid (YMHFA)
- Adult Mental Health First Aid (AMHFA)

## 6 COUNTIES COVERED IN NORTHEAST FLORIDA

- Clay County
- Duval County
- Flagler County
- Nassau County
- Putnam County
- St. Johns County

## CONTACT

-  [www.talkablecommunities.org](http://www.talkablecommunities.org)
-  [info@talkablecommunities.org](mailto:info@talkablecommunities.org)



# 24/7 Crisis Lines

2

## NATIONAL SUICIDE & CRISIS LIFELINE

Call or Text **988**

### VETERANS

Call **988**, Press 1  
OR Text **838-255**

### ESPAÑOL

Marque **988**,  
presione 2 OR  
Envíe 'AYUDA' al  
**988**.

### DEAF & HOH

Videophone can  
be accessed at  
[988lifeline.org](https://www.988lifeline.org).

## CRISIS TEXT LINE

Text 'HOME' to **741-741**

## TREVOR LIFELINE (LGBTQ+ COMMUNITY)

Call **1-866-488-7386** OR  
Text 'START' to **678-678**

## REFERRALS TO CARE

**211** OR **904-632-0600**  
Text 'HELLO' to **211-904**

# Recovery Community Resources

3

## HERE TOMORROW

[www.heretomorrow.org](http://www.heretomorrow.org)  
904-372-9087

## REBEL RECOVERY

[www.jax.rebelrco.org](http://www.jax.rebelrco.org)  
904-673-4021

## FIRST COAST RECOVERY ADVOCATES

[www.fcra-rco.org](http://www.fcra-rco.org)  
904-580-4538

## TEEN PEER SUPPORT

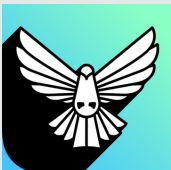
**1-800-852-8336**  
Text 'TEEN' to **839-863**

## ADDITIONAL MOBILE RECOVERY SUPPORT APPS



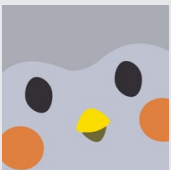
### IAMSOBER

Track your sobriety with a community that understands what you're going through. Build new daily habits and learn from others who are making changes happen.



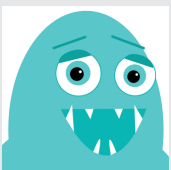
### THE HOPEFUL

The Hopeful is a daily-use self-care app created by To Write Love on Her Arms, which features encouragement, journaling, and mood tracking.



### FINCH

Finch is a self care app that helps you feel prepared and positive, one day at a time. Take care of your pet by taking care of yourself!



### ROOTD

Understand, and overcome anxiety & panic attacks with panic button, guided deep breathing, anxiety journal, stats page, emergency contact, and lessons.



### MYTHERAPY

Combining a pill tracker, mood tracker, and a health journal, MyTherapy enables you and your doctor to put your treatment's success into perspective.

# Clay County Resources

4



## 24/7 Crisis Response

Provides 24/7 on-demand crisis intervention services for all ages in Clay County.

**904-291-4357 (HELP)**



## PREFERRED PROVIDER

Clay Behavioral Health Center provides affordable mental health and substance use services to adults and children regardless of insurance coverage or ability to pay.

[www.ccbhc.org](http://www.ccbhc.org)

**Locations in Keystone, Middleburg, & Orange Park**

## ADDITIONAL RESOURCES AVAILABLE CLOSE BY

### Palms Medical Group

**Services Provided:** Mental Health Out-Patient Treatment  
[www.palmsmg.org](http://www.palmsmg.org)  
888-730-2374

### Elite DNA Behavioral Health

**Services Provided:** Mental Health Out-Patient Treatment, Medication Management, Referrals to Community Care  
[www.elitedna.com](http://www.elitedna.com)  
904-458-7780

### HCA Florida Orange Park Hospital

**Services Provided:** Mental Health In-Patient/Out-Patient Treatment, 24/7 Emergency Evaluations  
[www.hcafloridahealthcare.com](http://www.hcafloridahealthcare.com)  
904-639-8500

### Nemours Children's Health System

**Services Provided:** Individual Counseling, Medication Management for Youth  
[www.nemours.org/services/child-psychology](http://www.nemours.org/services/child-psychology)  
904-697-3600



## 24/7 Crisis Response

Provides 24/7 on-demand crisis intervention services for all ages in Duval County.

**904-982-4911**

## PREFERRED PROVIDERS

Child Guidance Center and Gateway - Steps to Recovery offer affordable mental health and substance use services to adults and children regardless of insurance coverage or ability to pay.



**Gateway - Steps to Recovery**  
[www.gatewaycommunity.com](http://www.gatewaycommunity.com)

**Locations in Jacksonville**



**Child Guidance Center**  
[www.cgcjax.org](http://www.cgcjax.org)

**Locations in Jacksonville & Middleburg**

## ADDITIONAL RESOURCES AVAILABLE CLOSE BY

### Children's Home Society of Florida

**Services Provided:** Individual Counseling, Medication Management  
[www.chsfl.org](http://www.chsfl.org)  
904-493-7744

### Mental Health Resource Center

**Services Provided:** Emergency Mental Health Services, In-Patient/Out-Patient Treatment  
[www.mhrcflorida.com](http://www.mhrcflorida.com)  
904-743-1883

### Community Rehabilitation Center, Inc.

**Services Provided:** Individual Counseling, Family Counseling, Drop-In Center, Medication Management  
[www.communityrehabcenter.org](http://www.communityrehabcenter.org)  
904-358-1211

### Wolfson's Children Hospital

**Services Provided:** Emergency Mental Health Services, In-Patient/Out-Patient Treatment  
[www.wolfsonchildrens.com](http://www.wolfsonchildrens.com)  
904-202-8000

# Flagler County Resources

6



## 24/7 Crisis Response

Provides 24/7 on-demand crisis intervention services for all ages in Volusia and Flagler counties.

**800-539-4228**



## PREFERRED PROVIDER

EPIC Behavioral Healthcare provides affordable mental health and substance use services to adults and children regardless of insurance coverage or ability to pay.

[www.epicbh.org](http://www.epicbh.org)

**Locations in Bunnell & St. Augustine**

## ADDITIONAL RESOURCES AVAILABLE CLOSE BY

### St. Augustine Youth Services, Inc.

**Services Provided:** In-Home Counseling, Referrals to Community Care, Residential Group Home  
[www.sayskids.org](http://www.sayskids.org)  
904-829-1770

### Hearthstone Foundation

**Services Provided:** Individual Counseling, Medication Management, Evaluations, and Support  
[hearthstonefoundation.org](http://hearthstonefoundation.org)  
386-238-1348

### Flagler OARS

**Services Provided:** Peer Support, Community Education, Volunteer Opportunities  
[www.flagleroars.org](http://www.flagleroars.org)  
386-233-3444

### SMA Healthcare

**Services Provided:** Residential Treatment for Pregnant Women and Women with Children under 5.  
[www.smahealthcare.org](http://www.smahealthcare.org)  
800-539-4228 - 24/7





## 24/7 Crisis Response

Provides 24/7 on-demand crisis assessment & intervention services for all ages in Nassau County.

**904-206-1756**



## PREFERRED PROVIDER

Starting Point Behavioral Healthcare provides affordable mental health and substance abuse services to adults and children regardless of insurance coverage or ability to pay.

[www.spbh.org](http://www.spbh.org)

**Locations in Callahan, Fernandina Beach, & Yulee**

## ADDITIONAL RESOURCES AVAILABLE CLOSE BY

### Barnabas Nassau

**Services Provided:** Housing, Nutrition, Medical, and Financial Assistance  
[www.barnabasnassau.org](http://www.barnabasnassau.org)  
904-261-7000

### Changing Tides

**Services Provided:** Grief Counseling, End of Life Services  
[www.changingtidesamelia.com](http://www.changingtidesamelia.com)  
904-415-1190

### Baptist Nassau Crossing Medical Campus

**Services Provided:** Emergency and Imaging Services, Primary Care, Specialty Physicians  
[www.baptistjax.com](http://www.baptistjax.com)  
[904-443-9770](http://www.baptistjax.com)

### Breakthroughs of North Florida

**Services Provided:** Individual Counseling, Evaluations, Educational Support Programs  
[www.breakthroughsnf.com](http://www.breakthroughsnf.com)  
904-849-1190

# Putnam County Resources

8



## 24/7 Crisis Response

Provides 24/7 on-demand crisis intervention services for all ages in Putnam County.

**386-872-2254**



## PREFERRED PROVIDER

Clay Behavioral Health Center provides affordable mental health and substance abuse services to adults and children regardless of insurance coverage or ability to pay.

[www.ccbhc.org](http://www.ccbhc.org)

**Locations in Keystone, Middleburg, & Orange Park**

## ADDITIONAL RESOURCES AVAILABLE CLOSE BY

### Recovery Point

**Services Provided:** Peer Services, Support Groups, Prevention Education, Community Supports

[www.recoverypointpalatka.com](http://www.recoverypointpalatka.com)

386-385-3079

### SMA Healthcare

**Services Provided:** Crisis Intervention, Individual Counseling, Medication Management, Referrals to Community Care

[www.smahealthcare.org](http://www.smahealthcare.org)

800-539-4228 - 24/7

### Children's Home Society of Florida

**Services Provided:** Counseling, Family Services, Transitional Living, Referrals to Community Care

[www.chsfl.org/locations/greater-daytona](http://www.chsfl.org/locations/greater-daytona)

386-274-0341

### Interface Youth Program at CDS

**Services Provided:** 24/7 Short-Term Youth Shelter for ages 10-17, Crisis Family Counseling

[www.cdsfl.org](http://www.cdsfl.org)

386-385-0405



## 24/7 Crisis Response

Provides 24/7 on-demand crisis intervention services for individuals ages 5 - 25 in St. Johns County.

**Call 911 OR 211 anywhere in St. Johns County and request a Mobile Response Team**



## PREFERRED PROVIDER

EPIC Behavioral Healthcare provides affordable mental health and substance abuse services to adults and children regardless of insurance coverage or ability to pay.

[www.epicbh.org](http://www.epicbh.org)

**Locations in Bunnell & St. Augustine**

## ADDITIONAL RESOURCES AVAILABLE CLOSE BY

### CAIR Center at Flagler Hospital

**Services Provided:** 24/7 Emergency Evaluations, Referrals to Community Care  
<https://www.st.johns.ufhealth/services/uf-health-behavioral-health-resource-center/>  
904-819-5204

### 904 Health

**Services Provided:** Medical Care, Health Education,  
[www.904healthcare.org](http://www.904healthcare.org)  
904-243-9040

### SMA Healthcare





**Services Provided:** Individual Counseling, Medication Management, Referrals to Community Care  
[www.smahealthcare.org](http://www.smahealthcare.org)  
800-539-4228 - 24/7

### St. Augustine Youth Services, Inc.

**Services Provided:** In-Home Counseling, Referrals to Community Care, Residential Group Home  
[www.sayskids.org](http://www.sayskids.org)  
904-829-1770

**talkable**  
COMMUNITIES



-  [www.talkablecommunities.org](http://www.talkablecommunities.org)
-  [info@talkablecommunities.org](mailto:info@talkablecommunities.org)
-  [/talkablecommunities](https://www.facebook.com/talkablecommunities)
-  [@talkablecommunities](https://www.instagram.com/talkablecommunities)

